

DIRENZA
PROVEN PERFORMANCE

FITTING GUIDE

BMW M140i Air Induction Kit

The Direnza BMW M140i Air Kit is a high performance, aftermarket Induction System offering increased airflow and performance over the stock setup. The extra air capacity provides the engine with more oxygen resulting in power gains and a great induction noise.

DISCLAIMER

- Allow the vehicle to cool completely prior to installation.
- We recommend that the intercooler is installed by a professional.
- Direnza is not responsible for any vehicle damage or personal injury due to installation errors, misuse or removal of Direnza products.

TOOLS REQUIRED

- Philips Screwdriver
- Flathead Screwdriver
- 7mm Socket
- 10mm Socket
- 4mm Allen Key

- 1x Air Filter
- 1x Metal Heat Shield
- 1x Airbox edging trim
- 5x Bolts
- 5x Washers
- 3x Nuts
- 2x Spire Clips
- 1x Induction pipe
- 2x Bracket
- 1x Silicone Joiner
- 3x Jubilee clips





1. Unplug the MAF sensor.



2. Undo jubilee clip securing the airbox to the intake pipe.



3. Separate airbox from the intake pipe.



4. Step 3 continued.



5. Remove the airbox.



6. Step 5 continued.



7. You can now undo the jubilee clip securing the intake pipe to the baffled intake section.



8. Remove the intake pipe.



9. Only the baffled section of the the intake will remain.



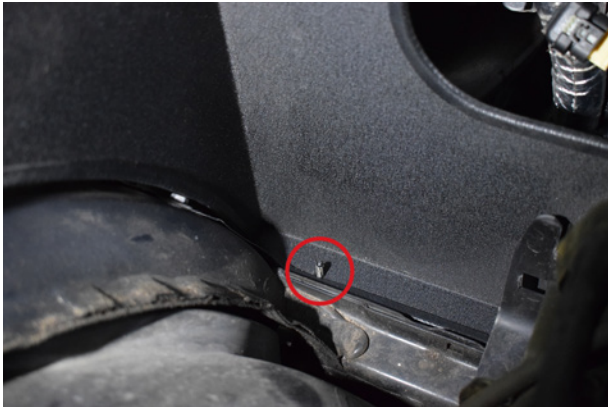
10. Remove original airbox mounting bobbin.



11. Step 10 continued.



12. The Direnza heat shield can now be installed.



13. The new heat shield mounts on the stud left behind after removing the bobbin.



14. Secure the heat shield using supplied washer and nut.



15. Step 14 continued.



16. A spire clip is then installed on the chassis towards the rear of the heat shield.



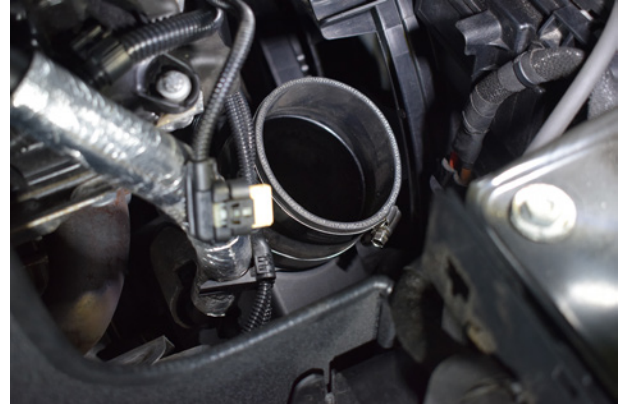
17. The mounting tap on the heat shield will line up with the spire clip.



18. Secure using supplied washer, bolt and nut.



19. Install silicone joiner and 2x jubilee clips onto the baffled section of intake pipe.



20. Step 19 continued.



21. The Direnza intake pipe can now be installed. The exact location of the pipe will be finalised later.



22. Remove MAF sensor mount from original intake pipe.



23. Install the MAF sensor mount into the Direnza intake pipe using supplied bolts.



24. A second spire clip is positioned on the chassis towards the filter end of the intake pipe.



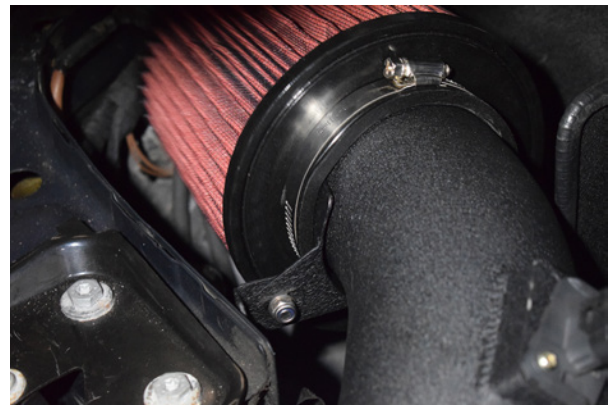
25. Secure the first support bracket using supplied washer, bolt and nut.



26. The second support bracket will then be secured to the first using the supplied washer, bolt and nut. Roughly positioned at the end of the intake pipe.



27. This step can be tricky, place the filter and jubilee over the intake pipe and over the curved section of the support bracket.



28. Step 27 continued. Ensure the filter is fully seated all the way round creating a good seal.



29. Secure the filter by tightening the jubilee clip.



30. You can now fully tighten the 2x jubilee clips on the silicone joiner/intake pipe.



31. Plug the MAF sensor in.



32. Your BMW M140i Cold Air Induction Kit is now installed.



33. Enjoy!

You may also like...



BMW M140i | 240i Quad Core Charge Cooler Radiator.



BMW M140i F20 | F22 Valved Catback Exhaust System.

We are always looking to feature your cars on our Social Media. **Tag and follow** us so we can keep the community growing! **@DIRENZAPERFORMANCE**

#DIRENZA #DIRENZAPERFORMANCE

