



DIRENZA
PROVEN PERFORMANCE

FITTING GUIDE

Mazda MX-5 MK3 NC

The Direnza Mazda MX-5 MK3 Cold Air Kit is a high performance, after-market induction system. Offering increased airflow and performance over the stock air filter setup. The extra air capacity provides the engine with more oxygen resulting in power gains and a great induction noise.

DISCLAIMER

- Allow the vehicle to cool completely prior to installation.
- We recommend that the Air Kit is installed by a professional.
- Direnza is not responsible for any vehicle damage or personal injury due to installation errors, misuse or removal of Direnza products.

TOOLS REQUIRED

- 4mm Allen Key
- Flathead Screwdriver
- 10mm Socket
- Ratchet
- Extension

- | | |
|------------------|---------------------|
| 1x Air Filter | 1x Nut |
| 1x Metal Air Box | 1x Mounting Bracket |
| 1x Aluminum Pipe | 1x Mounting Bobbin |
| 1x Jubilee Clip | 1x Spire Clip |
| 6x Screws | 3x Edging Trim |
| 4x Washers | |





1. Open the bonnet.



2. Undo 6mm Jubilee Clip on OEM intake pipe.



3. Step 2 continued.



4. Unplug MAF Sensor.



5. Step 4 continued.



6. Pull back clips on the OEM airbox.



7. Remove the pictured section of the airbox.



8. Step 7 continued.



9. Step 7 continued.



10. Remove 2x screws on the MAF sensor.



11. Step 10 continued.



12. Remove 2x nuts securing the remaining section of the airbox to the car.



13. Pull the remaining section of the airbox and panel filter away from the studs.



14. Insert the MAF sensor into the new aluminum intake pipe.



15. Secure using 2x screws supplied.



16. Insert into the OEM intake hose.



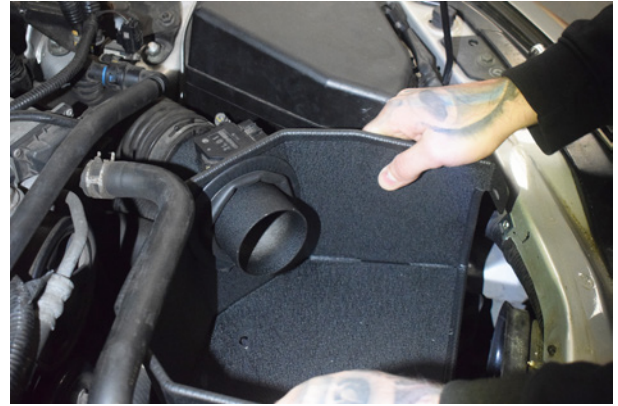
17. Step 16 continued.



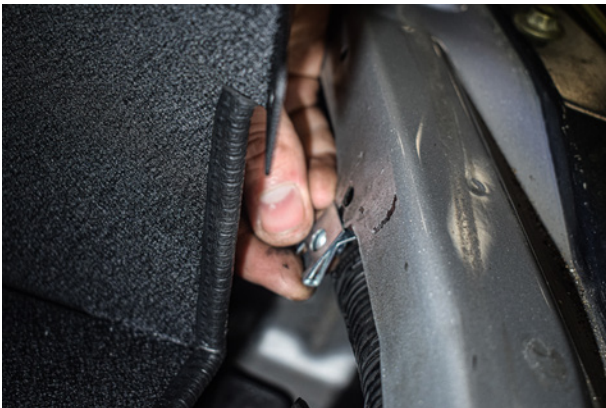
18. Install the bobbin onto the lower mounting bracket.



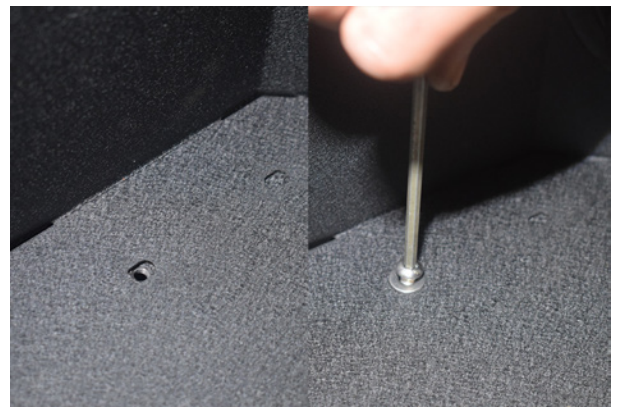
19. Place the mounting bracket into position.



20. Place the the metal air box in position on the car after installing the rubber trim around the edges.



21. Place spire clip into position where the airbox meets the cars chassis.



22. Line up the first mounting hole and tighten 50%.



23. This allows the second hole to be lined up.



24. Fasten using second screw.



25. A screw can now be used to secure the airbox to the spire clip mounting position.



26. Install and tighten nut onto the mounting stud.



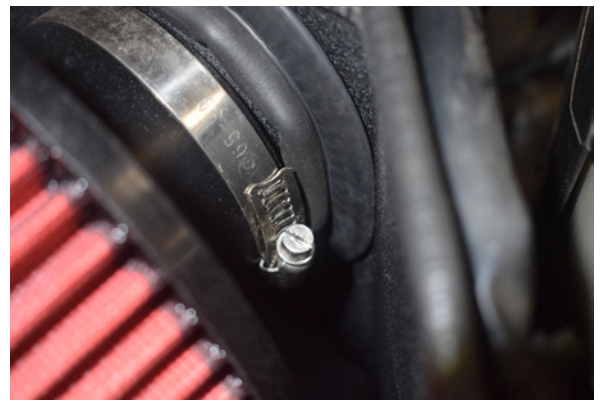
27. Step 26 continued.



28. All four pieces of hardware can now be tightened.



29. All four pieces of hardware can now be tightened.



30. Secure the air filter by tightening the jubilee clip.



31. Fully secure the OEM intake pipe jubilee clip.



32. Plug in the MAF sensor.



35. Your Mazda MX-5 MK3 Air Kit is now installed, enjoy!

You may also like...



Mazda MX5 NC MK3
Engine Mounts.



Mazda MX5 NC MK3 35mm
Lowering Springs.

THANKS FOR YOUR ORDER!

We really appreciate you choosing Direnza Performance for your recent purchase.

We are always looking to feature your cars on our Social Media. As a result, we are asking you to **tag and follow** us so we can keep the community growing! **@DIRENZAPERFORMANCE**

#DIRENZA #DIRENZAPERFORMANCE

